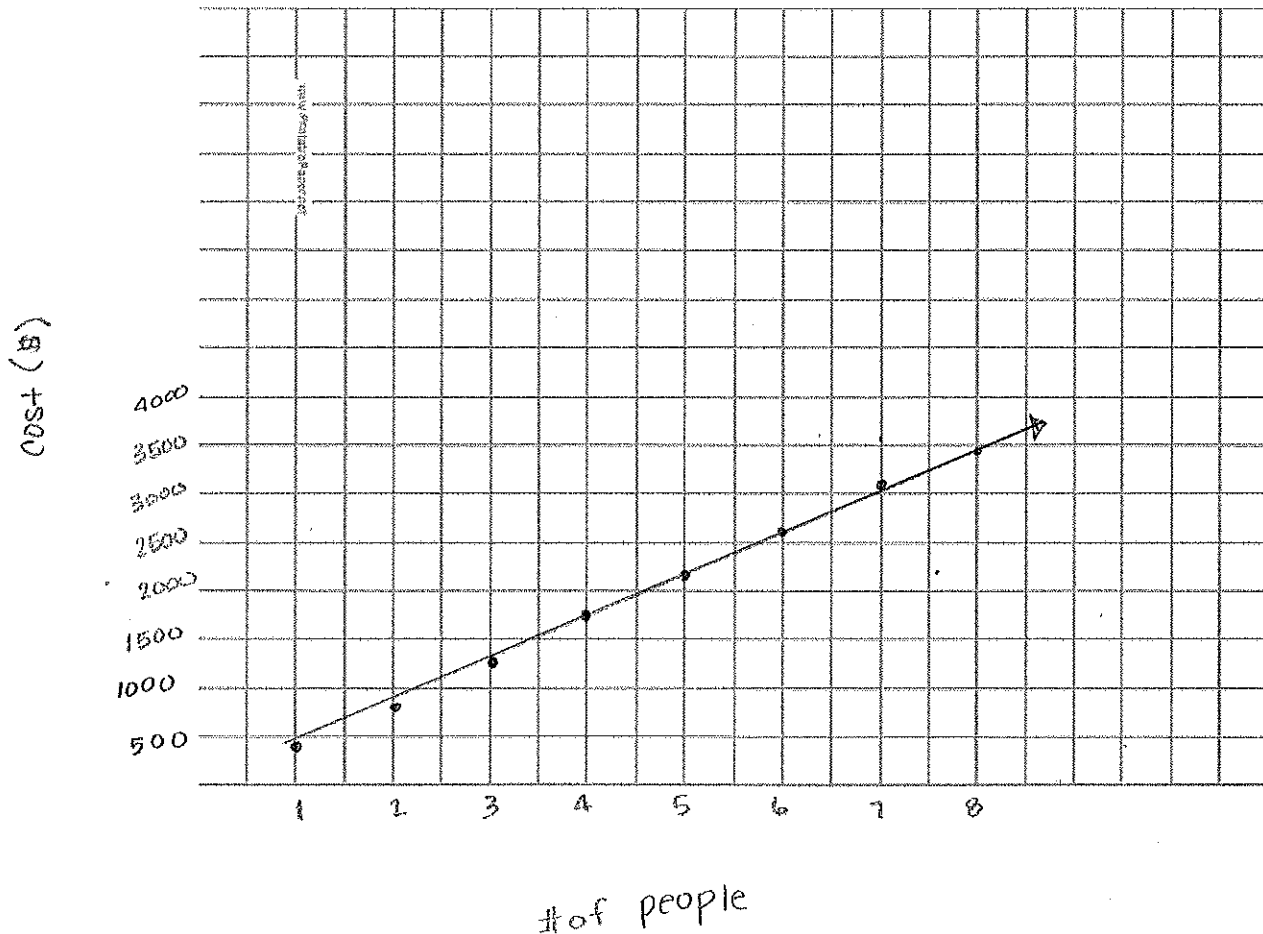


Name Mrs. Hale

Expenses

# of people	Cost (\$)
1	429
2	858
3	1287
4	1716
5	2145
6	2574
7	3003
8	3432

Bike Rental	\$ 120
Lunch (Day 1)	\$ 15
Dinner (Day 1)	\$ 10
Inn	\$ 150
Lunch (Day 2)	\$ 15
Dinner (Day 2)	\$ 25
Inn	\$ 79
Lunch (Day 3)	\$ 15
<hr/>	
Total	= \$ 429



Name Mrs. Hale

Day 1

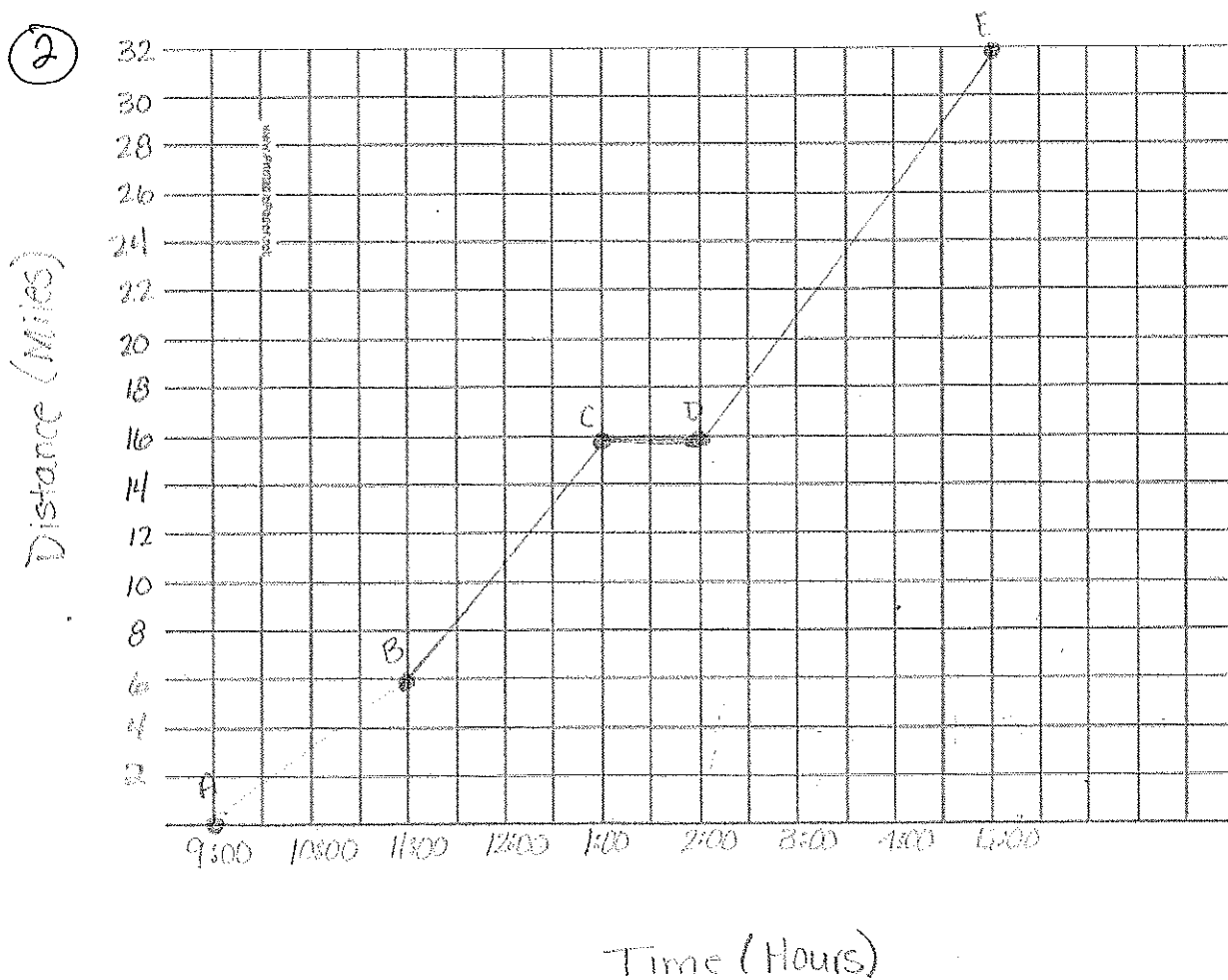
①

Day 1 of the bicycle trip will be from Traverse City to Torch Lake, a distance of 32 miles.

③

Points	Hours	Distance (Miles)
A-B	2	6
B-C	2	10
C-D	1	0
D-E	3	16
Total	8	32

②

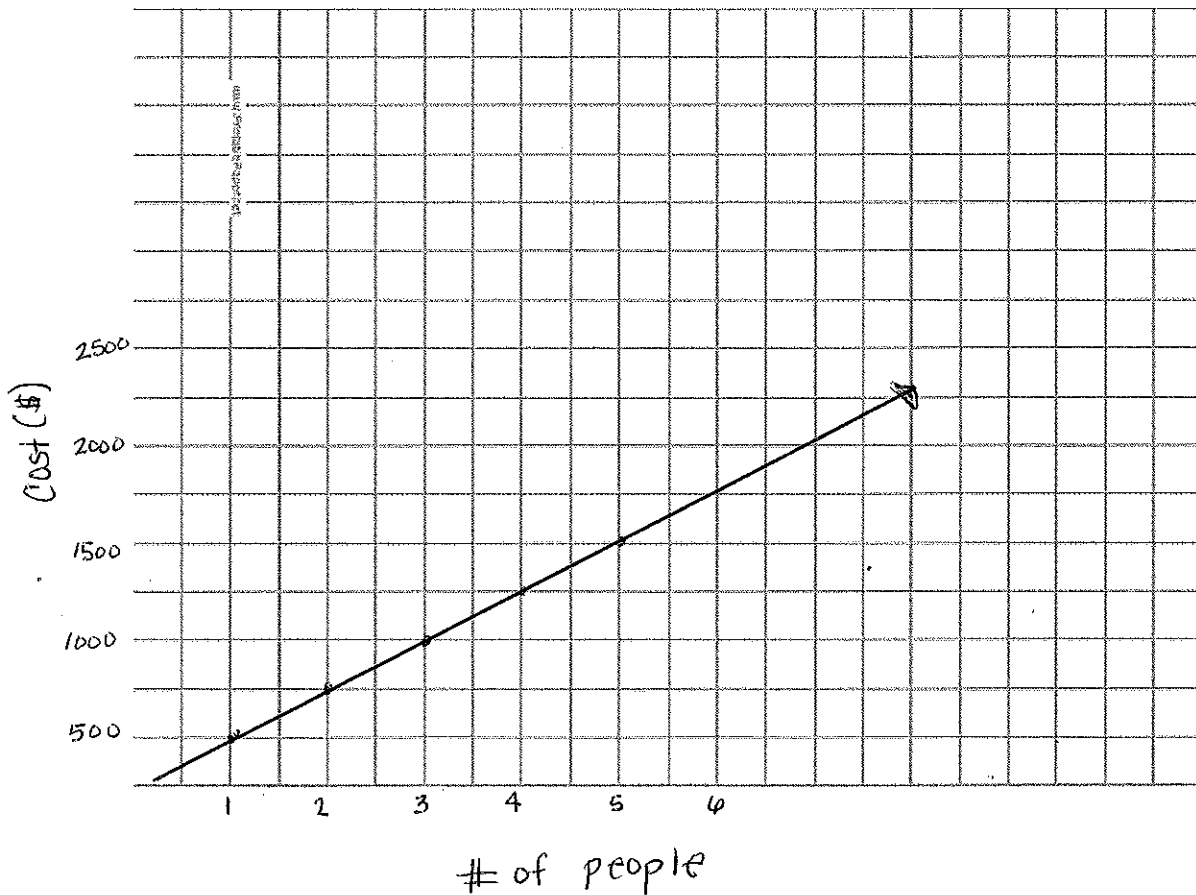


Name _____

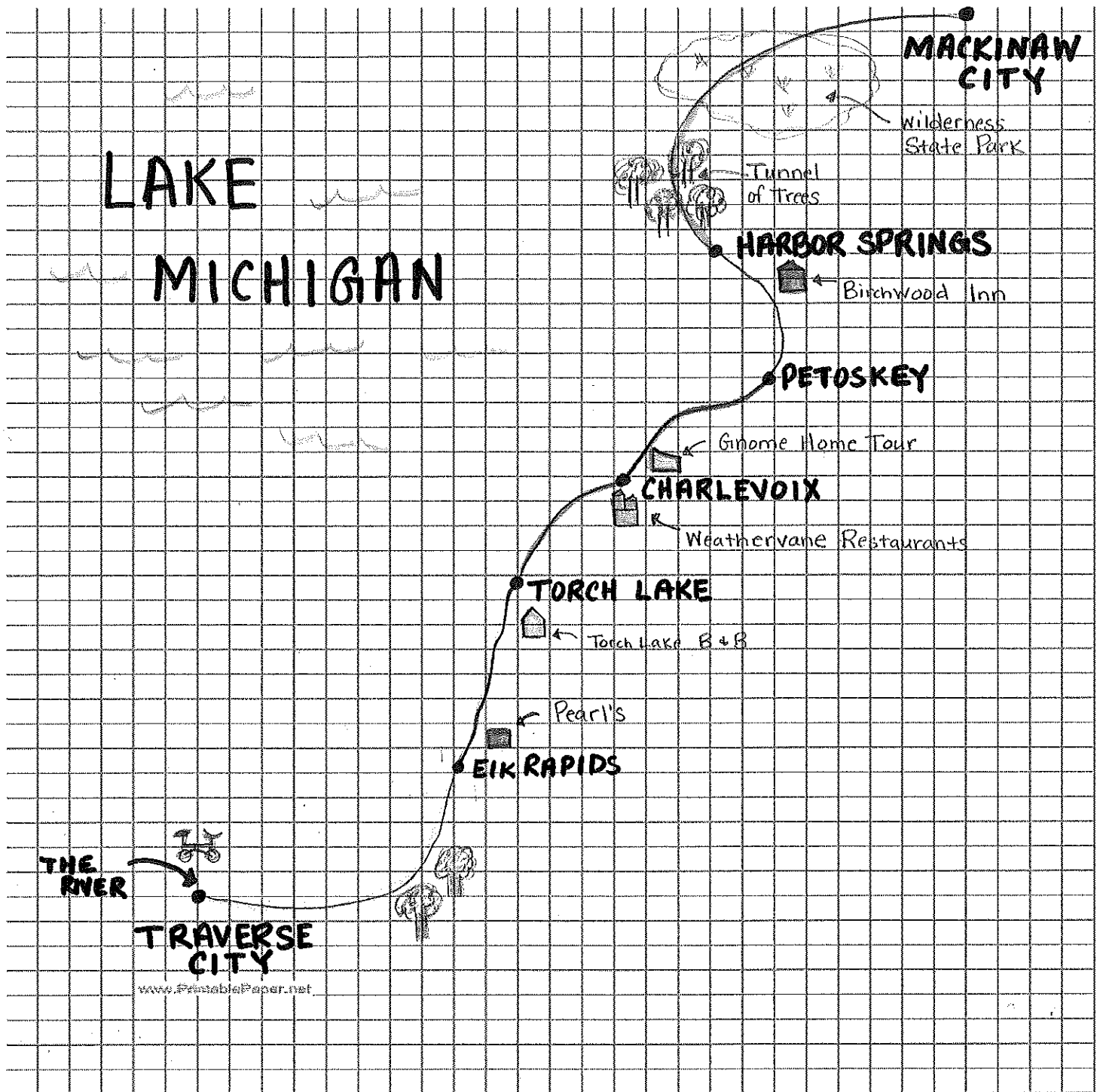
Income

# of people	Cost (\$)
1	500
2	1000
3	1500
4	2000
5	2500

My bicycle trip falls within tier 2 cost research. I would like to charge \$500 per person and hope to attract 5 people to take my trip!



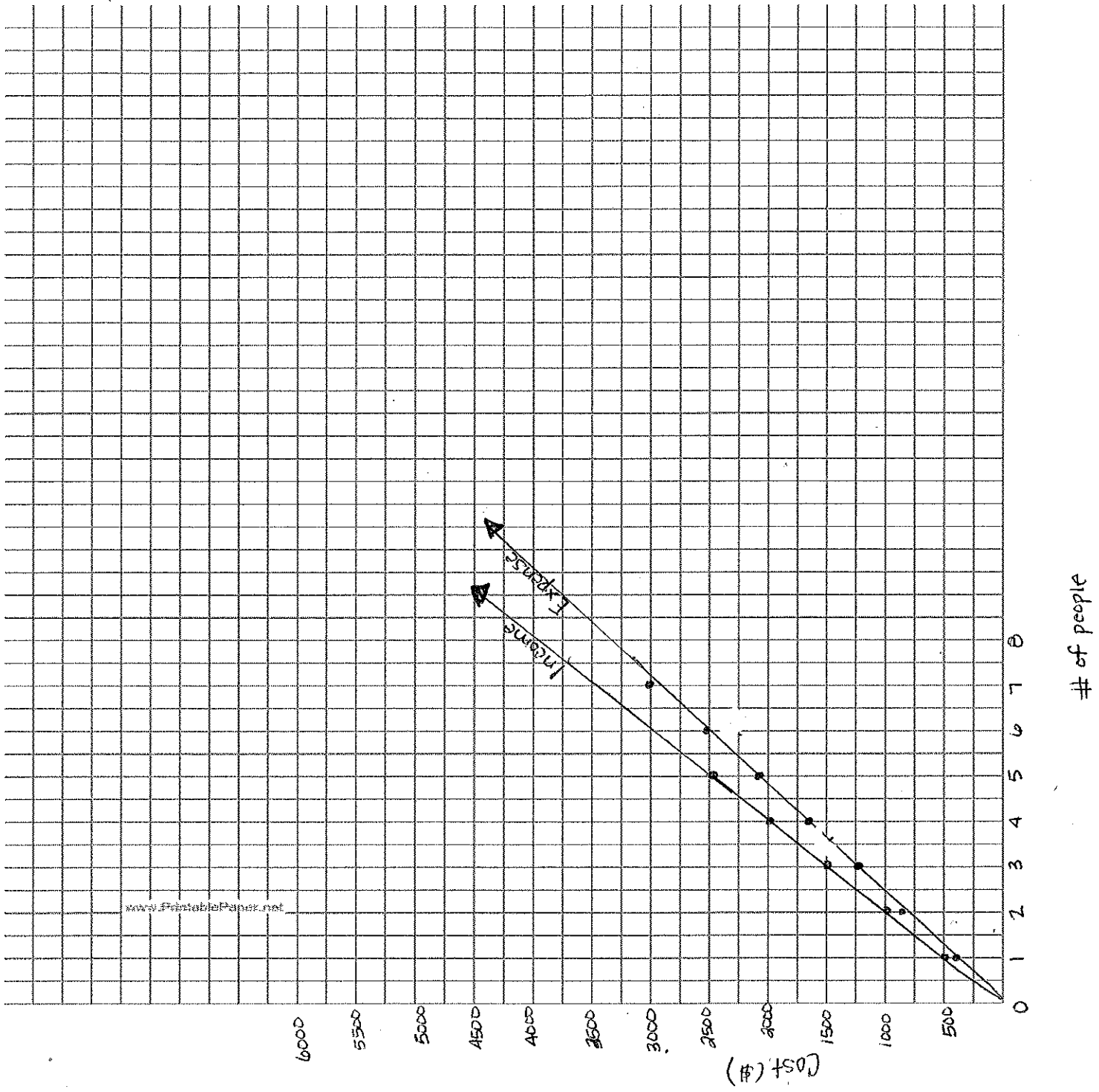
Map of Route



- TC to Eik Rapids - 16.5 miles
- Eik Rapids to Torch Lake - 16.8 miles
- Torch Lake to Charlevoix - 20 miles
- Charlevoix to Petoskey - 20 miles
- Petoskey to Harbor Springs - 9 miles
- Harbor Springs to Mackinaw City - 33 miles

**TRAVERSE CITY to
MACKINAW CITY - 115.9
miles**

Break-Even Graph



www.FreeTablePaper.net